

Mariella's Portfolio



As someone who works with land daily, my work is inspired by both land as a place that we inhabit, and as a living part of the food that we consume. A lot of my everyday tasks have to do with balancing the current needs of a working farm, while looking towards the future, I have to be careful with not taking too much, while also taking enough so that we have enough food on the table.

This to me, is an artform too.

The portraits that I create are inspired by people I've met, who are often displaced from locations where resource extraction has already come and gone. As a storyteller, I want to embrace this narrative of leaving land, coming back to land, and expand on what it means to me to leave behind your homeland. As an immigrant, I enjoy painting people from my community, and use loud bold colors that remind me of my own upbringing in South America. I see my printmaking as a form of propagation, relying on natural materials, either as inspiration or as part of the final product.



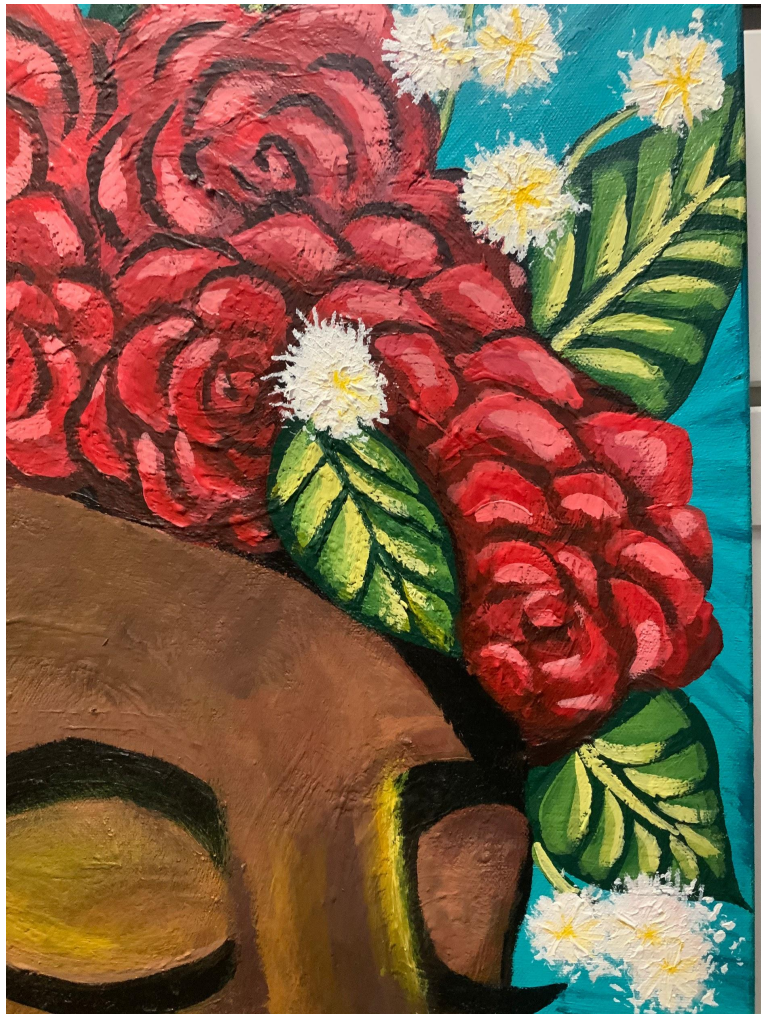




museumofchange.org
Always Changing. Always Open.











SLUG MAG







migrant queerness



as migration of care





